

POTENTIAL USAGE

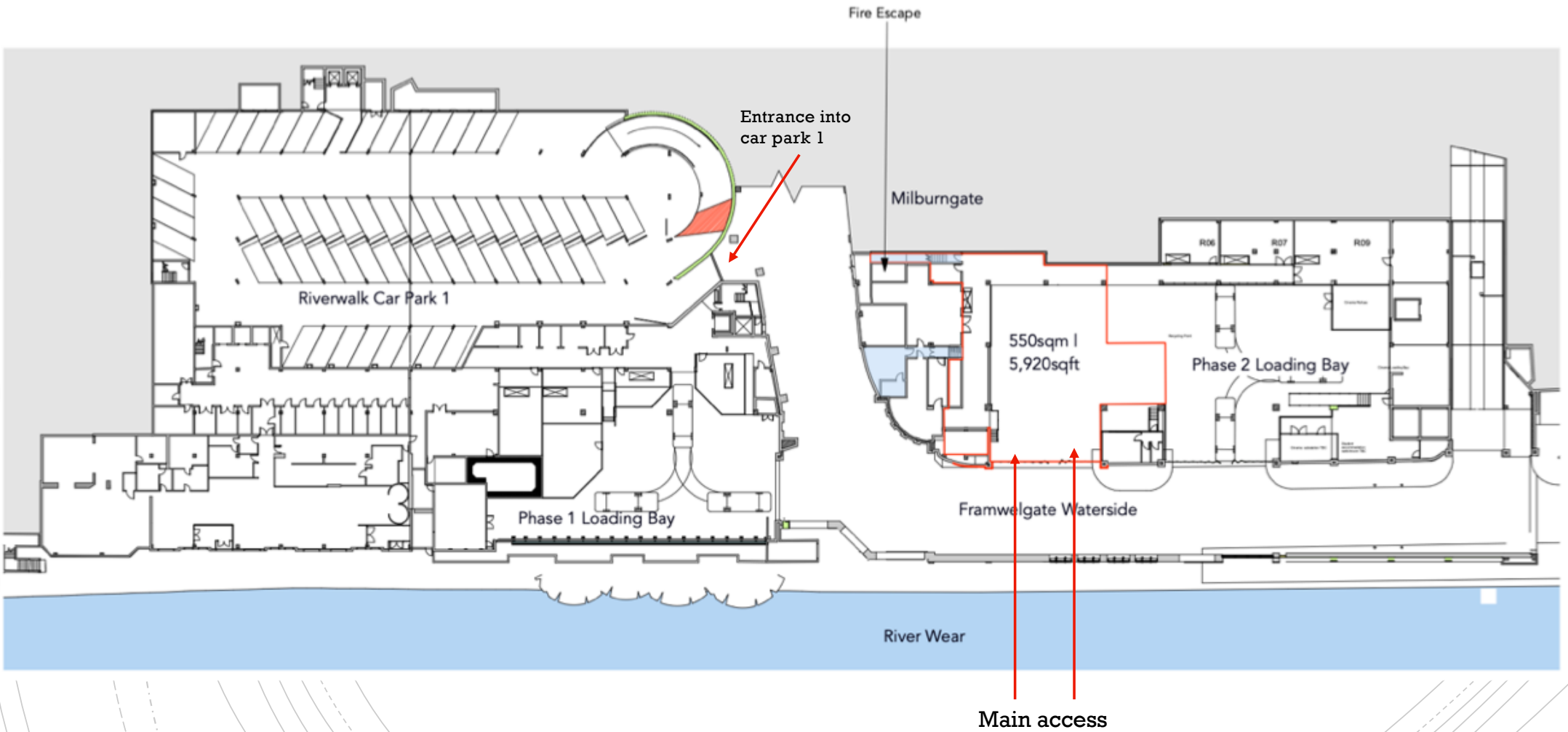
# THE YARD

THE RIVERWALK DURHAM



- Following the raft of successful lettings to Odeon Cinema, Turtle Bay, Cosy Club, Pizza Punks, Estabulo, The Confessional and Casa Peri Peri Riverwalk is set to become the dominant leisure location within Durham city centre.
- There is an opportunity for a complementary destination leisure operator to link with the leisure footfall generated by these operators and provide a further leisure dimension at Riverwalk.
- A significant 5,920 sqft area of the service yard (which previously served retail tenants) is now available for a wide number of uses and we are inviting interest with a view to an early 2023 opening”

# ■ SERVICE YARD FLOOR PLAN





## ■ THE YARD CONCEPT

4



- With the reduced usage of the service yard due to a smaller number of retail units, an area of circa 5,920 sqft can be formed. This can be a closed area or an open industrial style space.
- Its connectivity to The Riverwalk can be assisted with signage

# Potential Shipping Container Venue

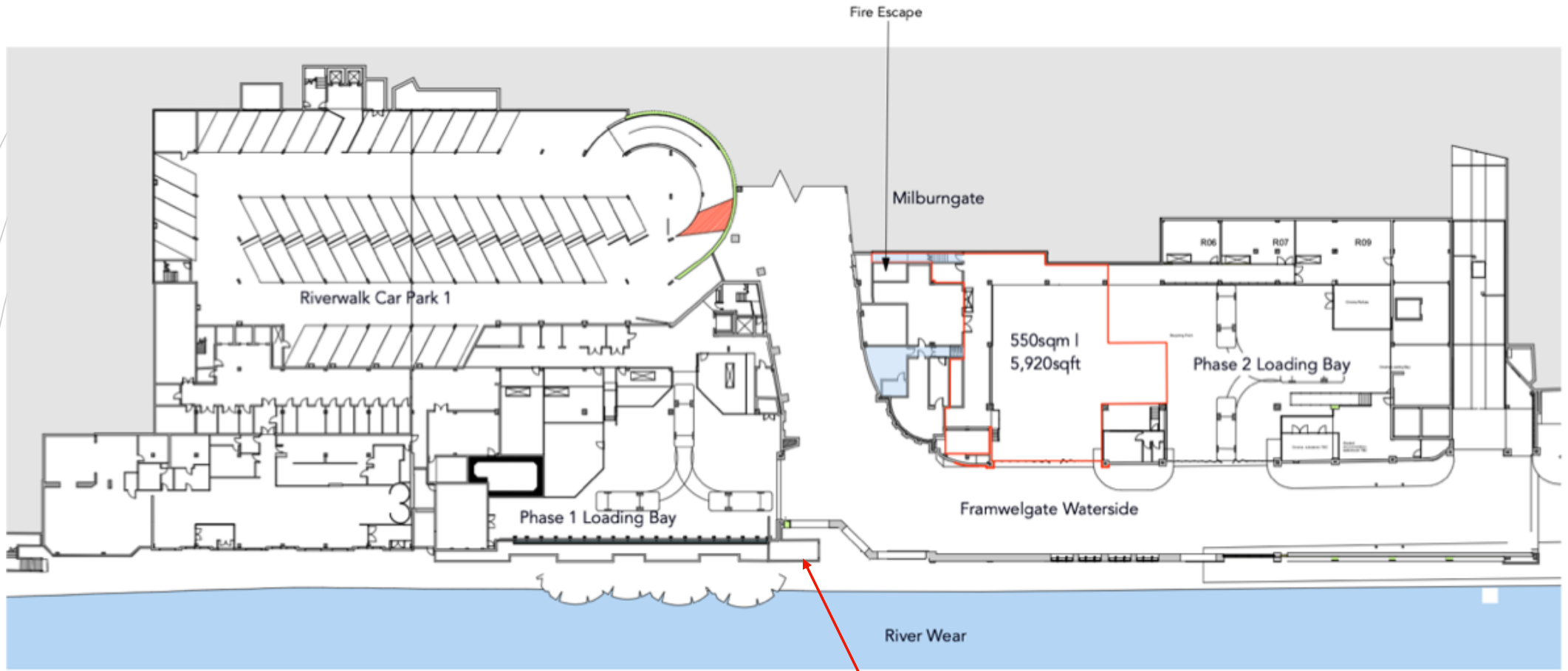
- Standard container
- Standard container can be stacked
- Space for alternative structure
- Potential extra spaces - TBC



- 9 containers on ground
- 3 alternative structures on ground
- 6 containers stacked on others
- 2 potential other spaces
- 1 bus conversion

Mobile bus

Existing site plan

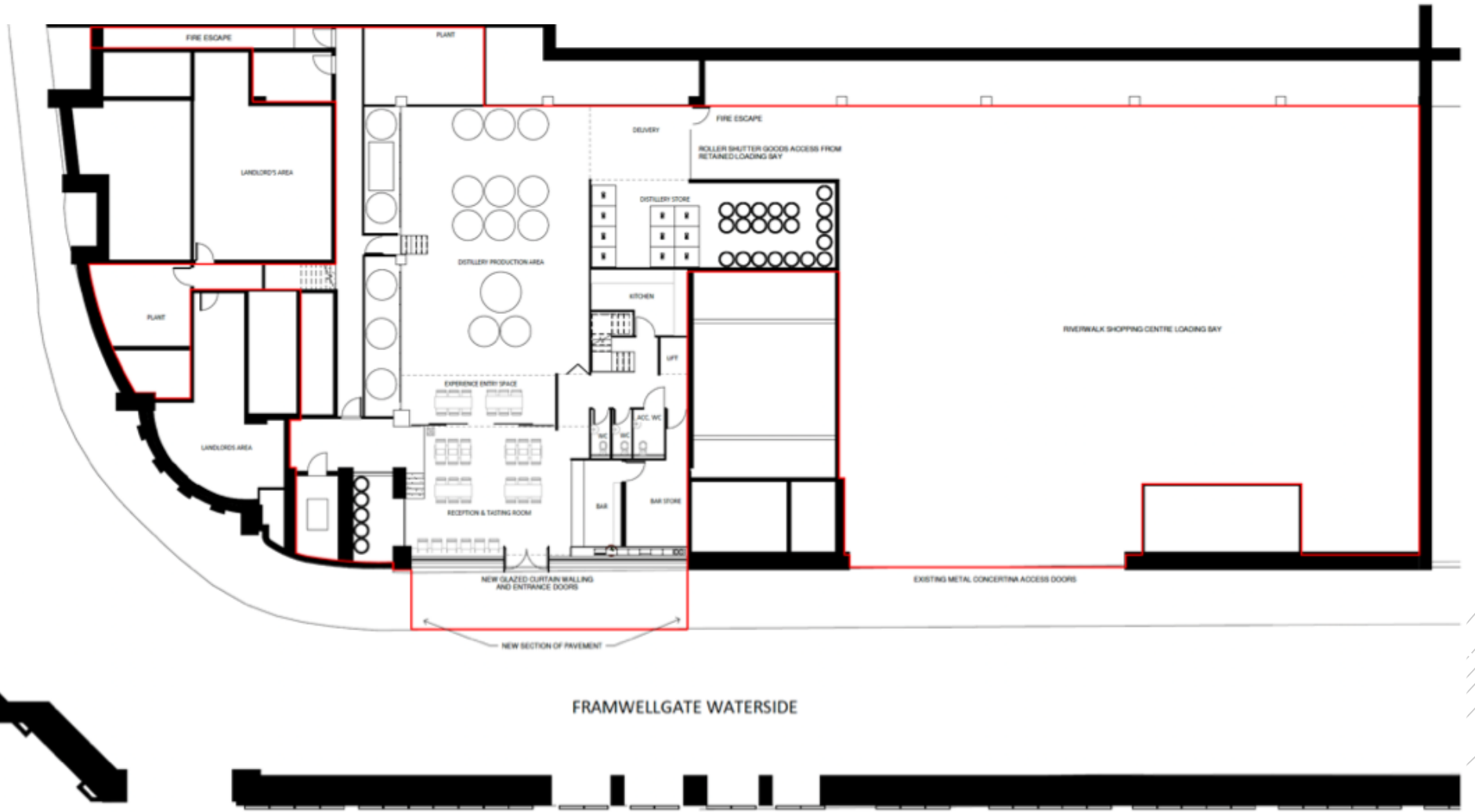


Stairs linking to other retail/ F&B units and Odeon



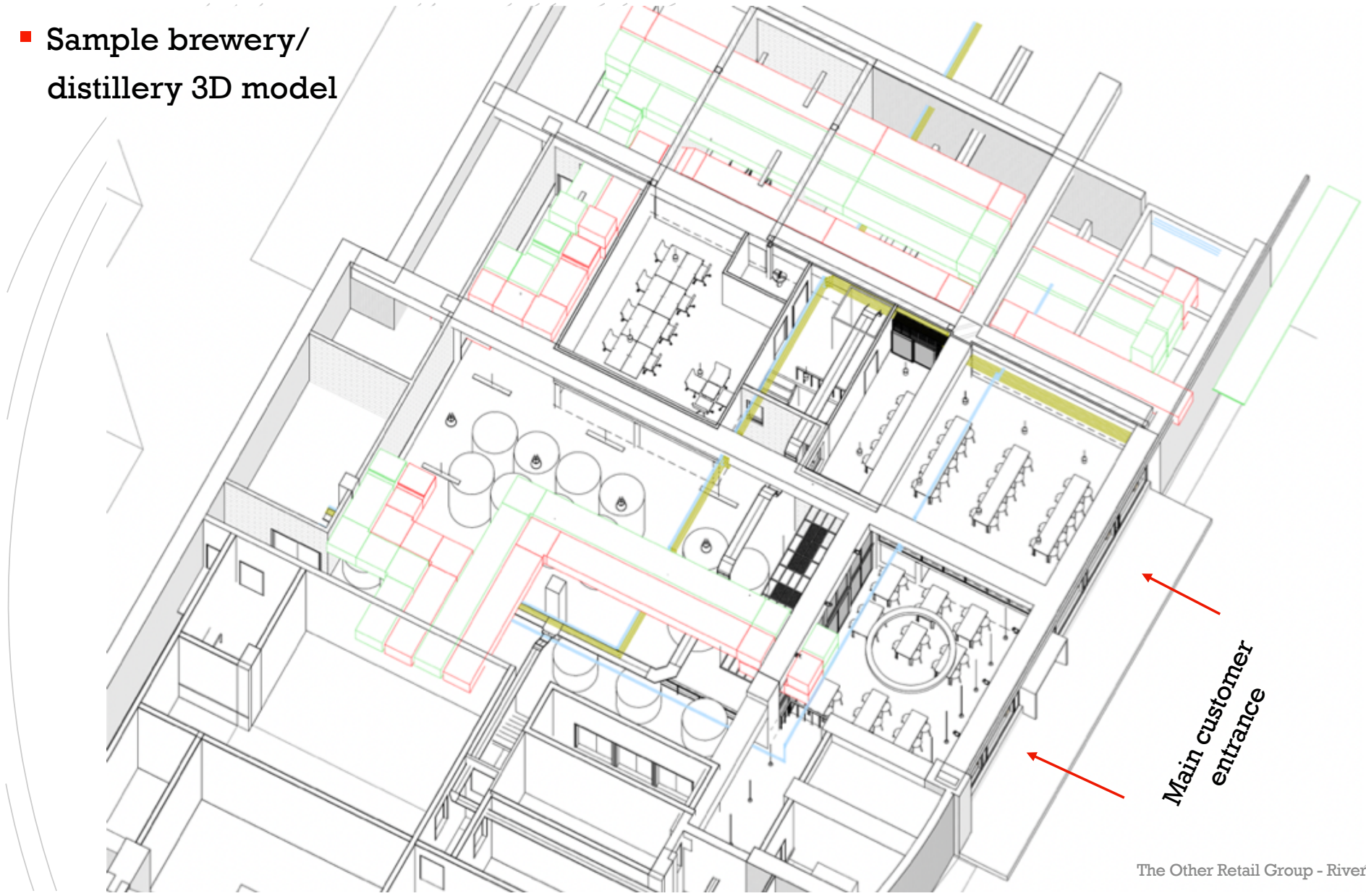


■ SAMPLE BREWERY/ DISTILLERY GROUND FLOOR PLAN





■ Sample brewery/  
distillery 3D model



*Main customer  
entrance*